

T-90 - Trójnik



T-90 - Trójnik równoprzelotowy 90° chemoodporny wykonany z tworzyw sztucznych

Wykonanie:

- równoprzelotowy, kąt 90°
- formowane maszynowo do 250mm
- formowane ręcznie od 280mm
- minimalna grubość ścianki 3 mm lub zgodnie z DIN 4741
- zakończenia mufowe (M)
- łączenie przez klejenie/spawanie/skręcanie



Dane techniczne

Temperatura stosowania:

Tr [°C] jak dla materiału

Temperatura pracy:

Tmax. [°C] jak dla materiału

Ciśnienie pracy:

Pmax. [Pa] jak dla materiału

Kolor:

jak dla materiału

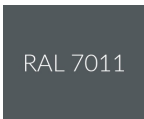
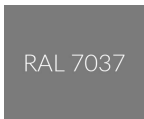
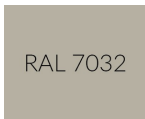
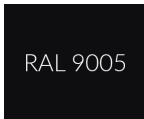
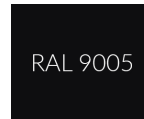

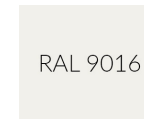
Wymiarowanie:

Trójnik T [m] - 90 - [d]

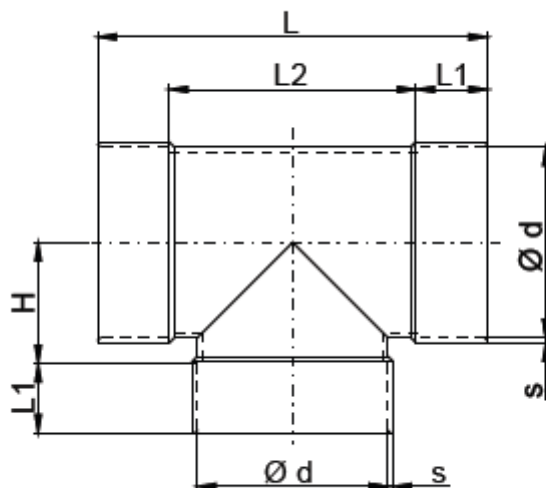
[m] - typ materiału

[d] - średnice kanału wentylacyjnego w mm

Oznaczenie:

| Typ | T1-90 | T2-90 | T3-90 | T4-90 | T5-90 | T6-90 | T9-90 |
|-----------------|--|--|--|--|---|---|--|
| Materiał | PVC-U | PPs | PP | PE | PPs-el | PVDF | PVC-UV |
| Kolor |  RAL 7011 |  RAL 7037 |  RAL 7032 |  RAL 9005 |  RAL 9005 |  NATURAL |  RAL 9016 |
| Nazwa | polichlorek winylu | polipropylen samogasnący | polipropylen | polietylen | polipropylen samogasnący elektroprowadzący | polifluorek winylidenu | polichlorek winylu |

Wymiary



| d [mm] | PVC / PVC-UV | | | | | | PP / PPs / PE / PPs-el / PVDF | | | | | |
|-------------|--------------|------------|------------|-----------|-----------|-----------|-------------------------------|------------|------------|-----------|-----------|-----------|
| | L [mm] | L1 [mm] | L2 [mm] | H [mm] | a [mm] | m [kg] | L [mm] | L1 [mm] | L2 [mm] | H [mm] | s [mm] | m [kg] |
| 0050 | 140 | 35 | 70 | 35 | 3,0 | 0,1 | 140 | 35 | 65 | 35 | 3,0 | 0,1 |
| 0063 | 160 | 35 | 90 | 45 | 3,0 | 0,2 | 160 | 35 | 80 | 42 | 3,0 | 0,1 |
| 0075 | 170 | 35 | 100 | 55 | 3,0 | 0,2 | 170 | 35 | 90 | 50 | 3,0 | 0,1 |
| 0090 | 200 | 35 | 130 | 60 | 3,0 | 0,3 | 200 | 35 | 105 | 65 | 3,0 | 0,2 |
| 0110 | 225 | 40 | 145 | 70 | 3,5 | 0,4 | 225 | 40 | 145 | 70 | 3,0 | 0,3 |
| 0125 | 285 | 50 | 185 | 85 | 3,0 | 0,6 | 285 | 40 | 190 | 80 | 3,0 | 0,4 |
| 0140 | 295 | 45 | 205 | 95 | 3,0 | 0,7 | 295 | 40 | 190 | 85 | 3,0 | 0,4 |
| 0160 | 330 | 40 | 250 | 100 | 4,5 | 0,8 | 330 | 40 | 245 | 95 | 3,0 | 0,5 |
| 0180 | 380 | 55 | 270 | 110 | 3,0 | 1,1 | 380 | 50 | 275 | 105 | 3,0 | 0,7 |
| 0200 | 385 | 50 | 285 | 120 | 5,0 | 1,2 | 385 | 50 | 280 | 120 | 3,0 | 0,8 |
| 0225 | 455 | 60 | 335 | 140 | 3,5 | 1,8 | 455 | 50 | 320 | 135 | 3,5 | 1,2 |
| 0250 | 415 | 50 | 315 | 145 | 5,5 | 1,8 | 415 | 50 | 310 | 145 | 3,5 | 1,2 |
| 0280 | 465 | 50 | 365 | 175 | 3,5 | 2,3 | 465 | 50 | 360 | 160 | 4,0 | 1,8 |
| 0315 | 530 | 60 | 410 | 190 | 3,5 | 2,9 | 5,0 | 50 | 420 | 185 | 5,0 | 2,8 |
| 0355 | 595 | 50 | 495 | 225 | 3,5 | 3,6 | 600 | 45 | 510 | 195 | 5,0 | 3,3 |

| d [mm] | PVC / PVC-UV | | | | | | PP / PPs / PE / PPs-el / PVDF | | | | | |
|-------------|--------------|-----|------|-----|------|-------|-------------------------------|-----|------|-----|------|------|
| 0400 | 610 | 60 | 490 | 240 | 3,5 | 4,2 | 610 | 60 | 490 | 260 | 5,0 | 4,8 |
| 0450 | 700 | 70 | 560 | 250 | 3,5 | 5,2 | 700 | 70 | 590 | 295 | 6,0 | 6,0 |
| 0500 | 780 | 70 | 640 | 305 | 4,0 | 7,5 | 780 | 70 | 640 | 320 | 6,0 | 7,6 |
| 0560 | - | - | - | - | - | - | 840 | 70 | 700 | 350 | 6,0 | 9,2 |
| 0600 | 810 | 70 | 670 | 340 | 50 | 12,0 | - | - | - | - | - | - |
| 0630 | - | - | - | - | - | - | 910 | 70 | 770 | 390 | 6,0 | 11,1 |
| 0700 | 940 | 80 | 780 | 385 | 6,0 | 18,2 | - | 120 | 940 | 480 | 8,0 | 18,4 |
| 0710 | - | - | - | - | - | - | 950 | 120 | 950 | 490 | 8,0 | 20,4 |
| 0800 | 1040 | 80 | 880 | 440 | 6,3 | 24,0 | 1040 | 120 | 1040 | 530 | 8,0 | 25,5 |
| 0900 | 1140 | 100 | 940 | 500 | 7,0 | 33,3 | 1140 | 120 | 1140 | 580 | 8,0 | 42,0 |
| 1000 | 1360 | 100 | 1160 | 560 | 8,0 | 50,1 | 1360 | 120 | 1240 | 630 | 8,0 | 59,0 |
| 1200 | * | * | * | * | * | * | * | * | * | * | * | * |
| 1250 | 1730 | 120 | 1490 | 755 | 10,4 | 106,2 | 1730 | 120 | 1490 | 750 | 10,0 | 68,3 |